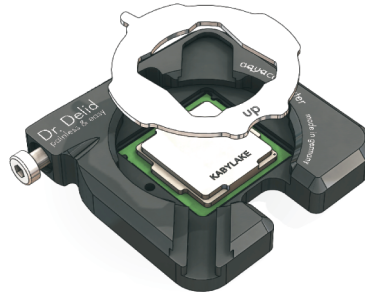


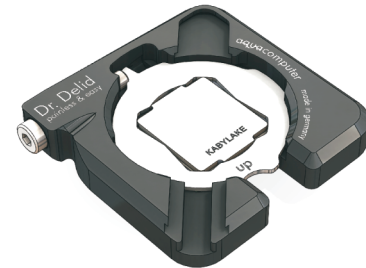
Dr. Delid Manual



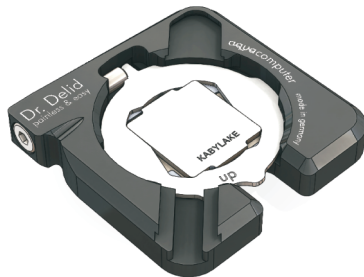
Unfasten the screw,
remove the delid disc.



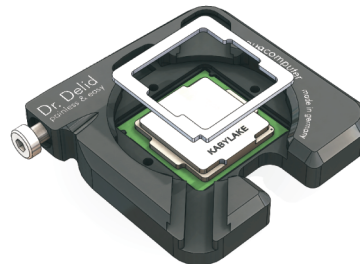
Insert your CPU and
the delid disc.



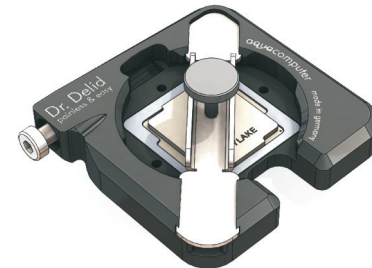
Turn the delid disc by hand to lock
your CPU securely in Dr. Delid.



Fasten the screw until the
heat spreader comes loose.



After cleaning, apply new
thermal grease onto the die.
Apply glue to the heatspreader. Insert
the CPU again and add the centering tool.



Slide in the press tool and
apply slight pressure
to the heat spreader.